

# SyncoFloor

## High Performance Polymer Flooring System

- ◆ Cost Effective
- ◆ Attractive Floor Coating
- ◆ Low odor
- ◆ Hygienic and Easy to Clean
- ◆ Resistant to a Wide Range of Industrial-grade Chemicals

### FEATURES

#### 1. Chemical Resistance

- Withstand a wide range of industrial-grade chemicals
- Unaffected by hot or cold water

#### 2. Wear Resistance

- Excellent adhesion to concrete
- High mechanical strength
- Good abrasion resistance
- Good protection against to forklift traffic

#### 3. Hygienic

- Seamless, impermeable, sealed surface
- Non-dusting
- Easy to clean

#### 4. Safe

Anti-skid, anti-slip properties

#### 5. Attractive

Enhance working environment

### USES

#### Public Building

- Offices
- Schools
- Showrooms
- Hospitals
- Hotels

#### Pharmaceutical / Health Services

- Laboratories
- Pharmacies
- Cleaning room facilities
- Production plant
- Storage facilities

#### Industry

- Textile industries
- Pulp and paper mills
- Spinning and weaving mills
- Electronic engineering
- Food and beverages
- Automotive industries

#### Power Generation

- Control rooms
- Generator rooms

# SyncoFloor Top Coat STC 713 (2K)



Light Grey 7032



Medium Grey 7001



Graphite Grey 7024



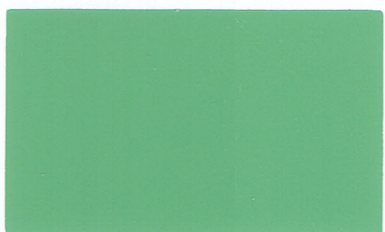
Light Alabaster 1015



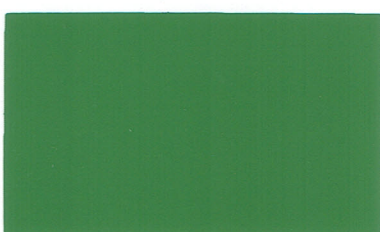
Traffic Yellow 1023



Beige 1001



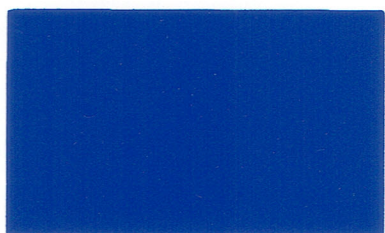
Pale Green 4150



Leaf green 6010



Pastel Blue 5024



Signal Blue 5005



Signal Red 3001



Black 7021

## Metallic COLOR



Pearl Blue



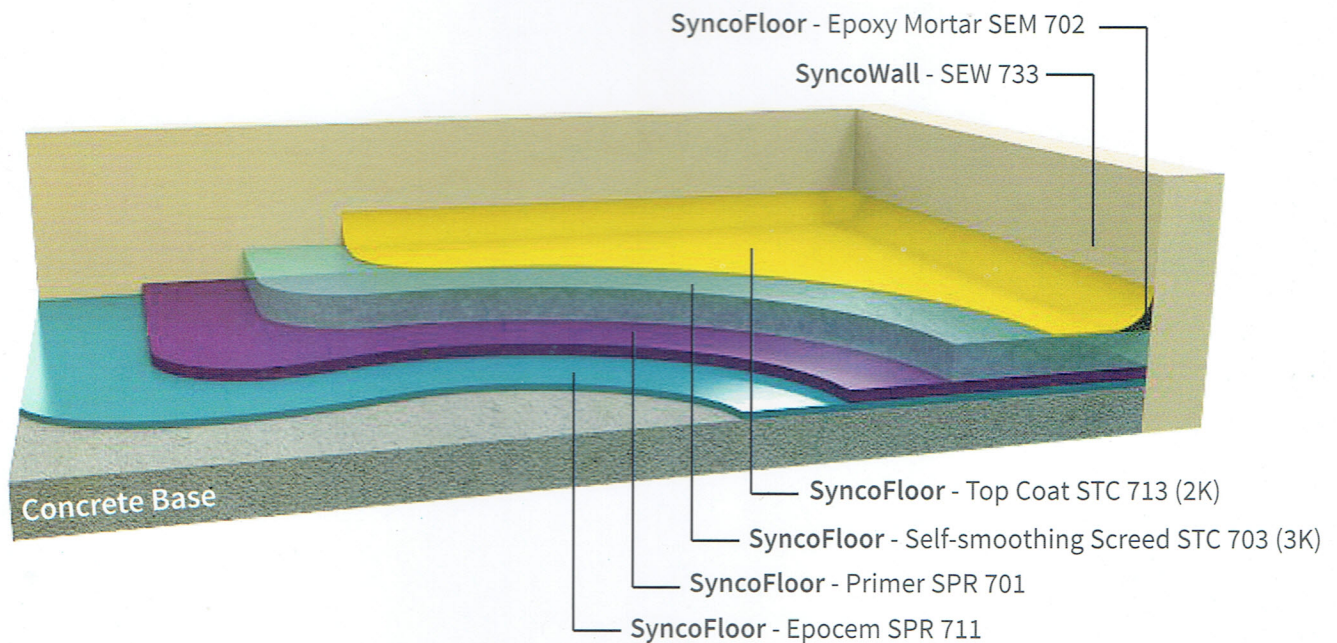
Pearl Gold



Pearl Orange

◆ The Colors in this card are approximate only. Special Colors are also available.

# EPOXY SELF-SMOOTHING SCREEDS



## ◆ Typical Properties of SyncoFloor Epoxy Flooring Screeds ◆

Compressive strength	: 78 - 80 N/mm <sup>2</sup>
Flexural strength	: 28 - 30 N/mm <sup>2</sup>
Adhesion to concrete	: ≥ 2 - 3 N/mm <sup>2</sup> (damaged concrete)
Modulus of elasticity	: 9000 N/mm <sup>2</sup>
Application temperature	: 10° C - 35° C

