

POLYFLOOR[®]

HEAVY DUTY POLYMER FLOORING SYSTEM

- Outstanding mechanical properties including superior wear resistance
- Resistant to several chemicals
- Minimal risk of cracking and excellent adhesion to the substrate
- Negligible increase in floor weight
- Seamless surface
- Hygienic, non-porous and easily sterilized surface
- Low maintenance cost

FEATURES

1. HYGIENIC

- Seamless, impermeable, sealed surfaces
- Easy to be cleaned
- Non dusting

2. CHEMICAL RESISTANT

- Withstand a wide range of commonly used chemicals
- Unaffected by hot or cold water

3. WEAR RESISTANCE

- Excellent adhesion to concrete
- High mechanical strength
- Abrasion resistant
- Resistant to forklift traffic

4. SAFE

- Anti skid, anti slip properties

5. DECORATIVE APPEARANCE

USES

PUBLIC BUILDING

- Schools
- Offices
- Hospitals
- Showrooms
- Hotels

INDUSTRY

- Textile industrial
- Pulp & paper mills
- Electronic engineering
- Spinning and weaving mills
- Food and beverages
- Dry food packaging plant
- Automotive Industrial

PHARMACEUTICAL INDUSTRY/ HEALTH SERVICES

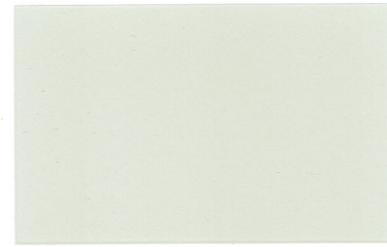
- Laboratories
- Clean room facilities
- Production plant
- Packaging storage facilities
- Pharmacies

POWER GENERATION

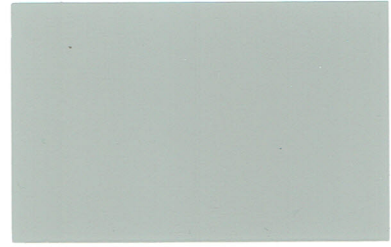
- Nuclear power plant
- Control rooms
- Generator rooms

POLYFLOOR[®] PFT - 213 / 253

White



Ivory



Light Grey



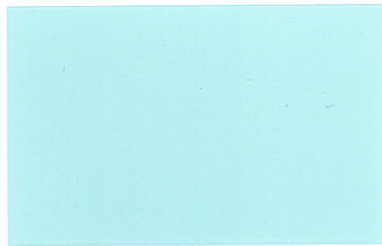
Light Alabaster



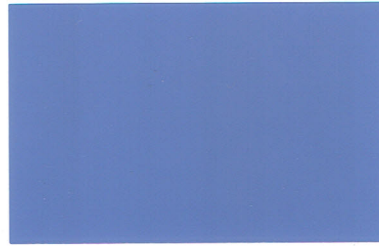
Beige



Grey



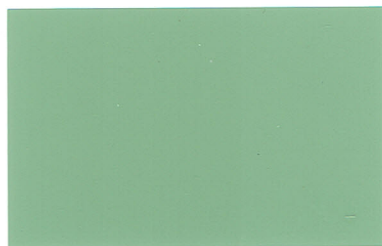
Light Blue



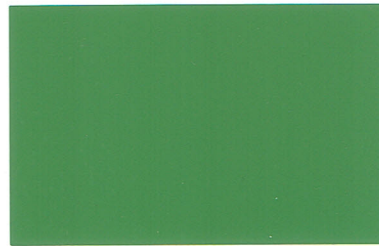
Blue Purple



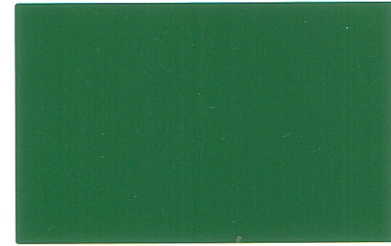
Victoria



Pale Green



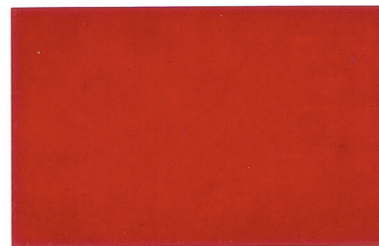
Leaf Green



Dark Green



Maize Yellow



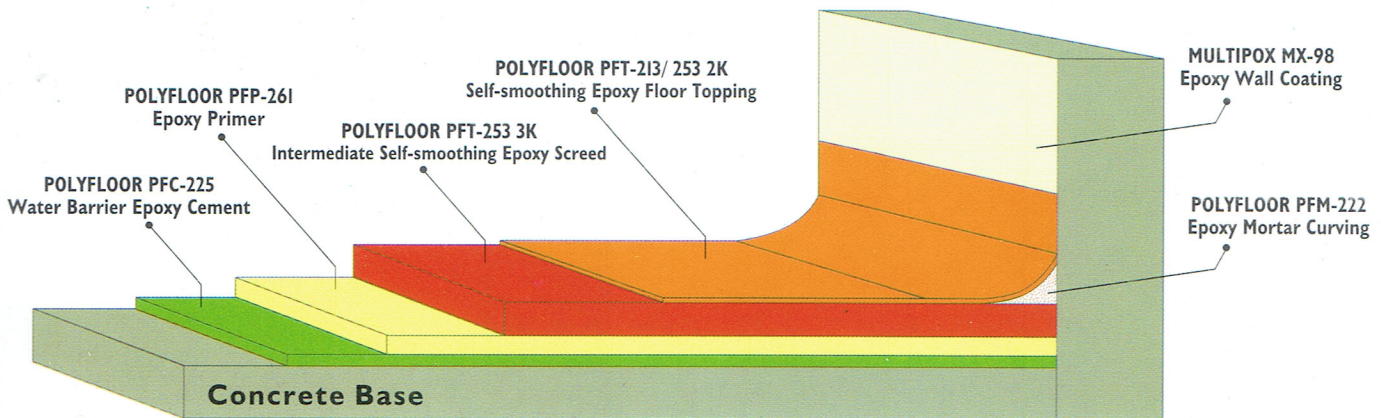
Geranium



Graphite Grey

● The colors in this card are approximate only. Special colors are also available.

EPOXY SELF-SMOOTHING SCREEDS



Typical properties of POLYFLOOR Epoxy Flooring Screeds

Compressive strength	: 80 N/mm ²
Flexural strength in tension	: 30 N/mm ²
Adhesion to concrete	: ≥ 3 N/mm ² (damaged concrete)
Modulus of elasticity	: 9000 N/mm ²
Application temperature	: 10° C - 35° C
Electrical resistance	: 10 ¹² Ω

Chemical Resistance

• HCL 10%	: Good	• HNO3 20%	: Fair	• NaClO	: Fair
• HCL 20%	: Good	• NH3 15%	: Good	• Bensin	: Good
• HCL 30%	: Good	• NH3 27%	: Good	• Xylene	: Fair
• HCL 36%	: Fair	• H2SO4 10%	: Good	• Toluene	: Good
• NaOH 10%	: Good	• H2SO4 20%	: Good	• Acetone	: Fair
• NaOH 20%	: Good	• H2SO4 40%	: Fair	• Butyl Acetate	: Fair
• NaOH 50%	: Good	• H2SO4 60%	: Fair	• C2H5OH 10%	: Fair
• NaOH 100%	: Good	• H2SO4 80%	: Fair	• C2H5OH 20%	: Fair
• NaCL 50%	: Good	• H2SO4 98%	: Fair	• C2H5OH 50%	: Fair
• NaCL 100%	: Good	• H2O2	: Good	• C2H5OH 70%	: Fair
• CH3COOH 10%	: Fair	• HCOOH 10%	: Fair	• C2H5OH 98%	: Fair
• CH3COOH 20%	: Fair	• HCOOH 20%	: Fair		
• HNO3 10%	: Fair	• H3PO4	: Fair		